

# 560 4TH STREET

PRIME LOCATION IN SOMA



**KENNETH SILVER**

**DRE 01216543**

**415.318.2603**

**[ken@thgcommercial.com](mailto:ken@thgcommercial.com)**

The Hawthorne Group Commercial Real Estate Services, Inc. have obtained the above information from sources believed to be reliable, but no representations of any kind expressed or implied are being made as to the accuracy of such information. All references to square footage, lot size, age of improvements, or income/expenses are approximations only. Buyer should conduct an independent investigation of all pertinent property information. The Hawthorne Group, Inc. bare no liability for any errors, inaccuracies or omissions.

**[www.thgcommercial.com](http://www.thgcommercial.com)**





## PROPERTY SUMMARY

**Address:** 560 4th St, San Francisco, CA 94107

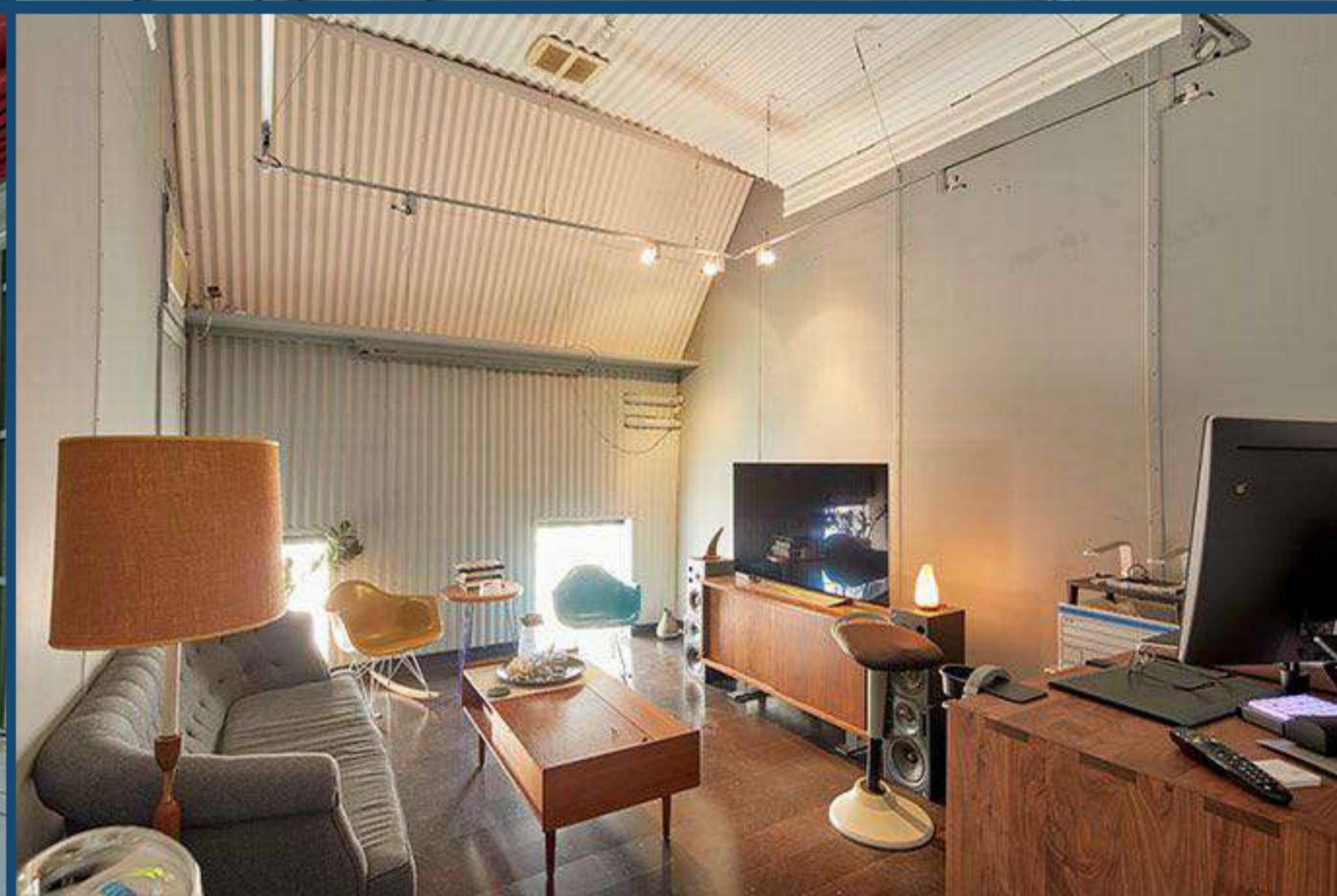
**Size:** +/-5,000 RSF

**Available:** Now

**Term:** Negotiable

**Asking Rent:** Negotiable





## FEATURES

Three private offices, two large meeting rooms, HVAC, Skylights, two restrooms, kitchenette with adjacent seating, open space with a high ceiling, storage area, and a garage door that provide easy loading/unloading plus drive in capability.





**560  
4TH STREET**

## **FULL BUILDING BRANDING OPPORTUNITY**

High identity building with close proximity to all freeways, MUNI Light Rail, BART, Caltrain, and the Transbay Terminal. The walkable neighborhood is rich with amenities including Oracle Stadium, South Park, the Embarcadero waterfront, and their associated restaurants and retail.



GROUND FLOOR PLAN

2ND FLOOR OFFICES

